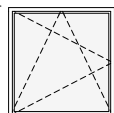
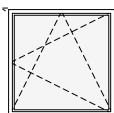


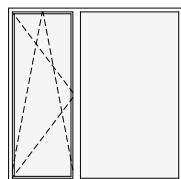
schemat okien w widoku od wewnątrz



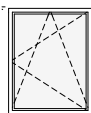
O7d okno z parapetem
hp = 85 cm



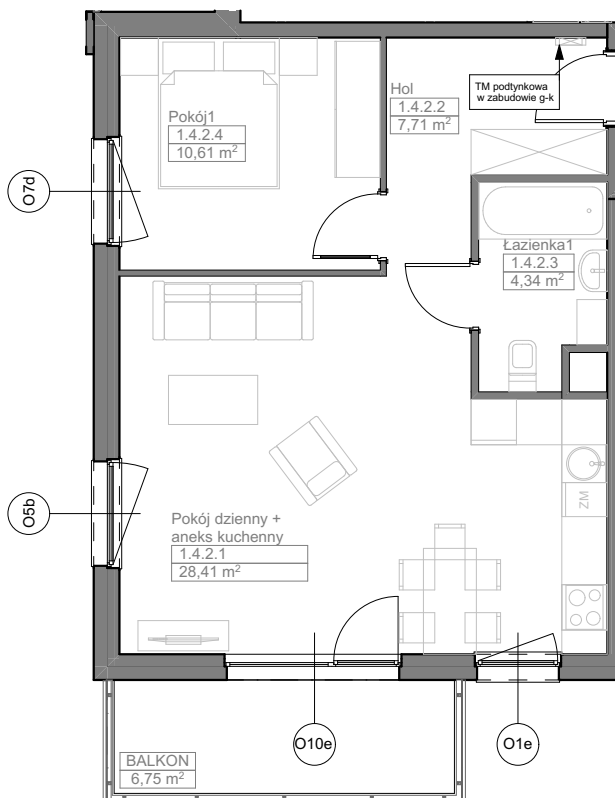
O5b okno z parapetem
hp = 90 cm



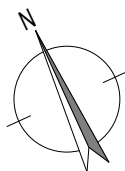
O10e okno balkonowe z naświetlem
hp = 0 cm



O1e okno z parapetem
hp = 90 cm



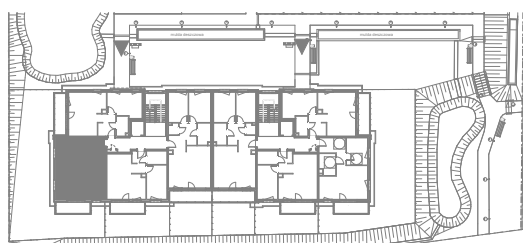
Zadanie VII
Mieszkanie F.1.4.2
Powierzchnia **51,07 m²**
Poziom III PIĘTRO



UWAGI:
1. Powierzchnie mieszkań liczone wg. normy PN-ISO-9836:2015-12 (tolerancja ±5cm)
2. Wysokość parapetu hp - tolerancja ±2cm



NABYWCA



DEWELOPER