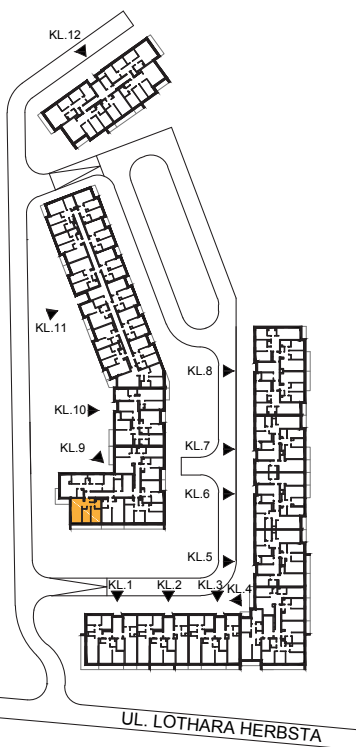
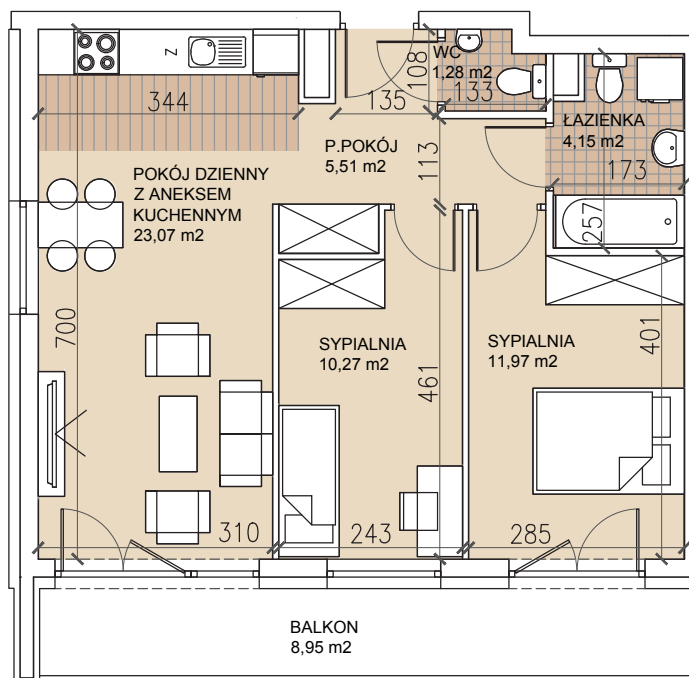


ul. Lothara Herbsta



powierzchnia użytkowa **56,25** m<sup>2</sup>

|                               |                      |
|-------------------------------|----------------------|
| pokój dzienny z aneksem kuch. | 23,07 m <sup>2</sup> |
| sypialnia                     | 11,97 m <sup>2</sup> |
| sypialnia                     | 10,27 m <sup>2</sup> |
| łazienka                      | 4,15 m <sup>2</sup>  |
| wc                            | 1,28 m <sup>2</sup>  |
| przedpokój                    | 5,51 m <sup>2</sup>  |
| balkon                        | 8,95 m <sup>2</sup>  |

