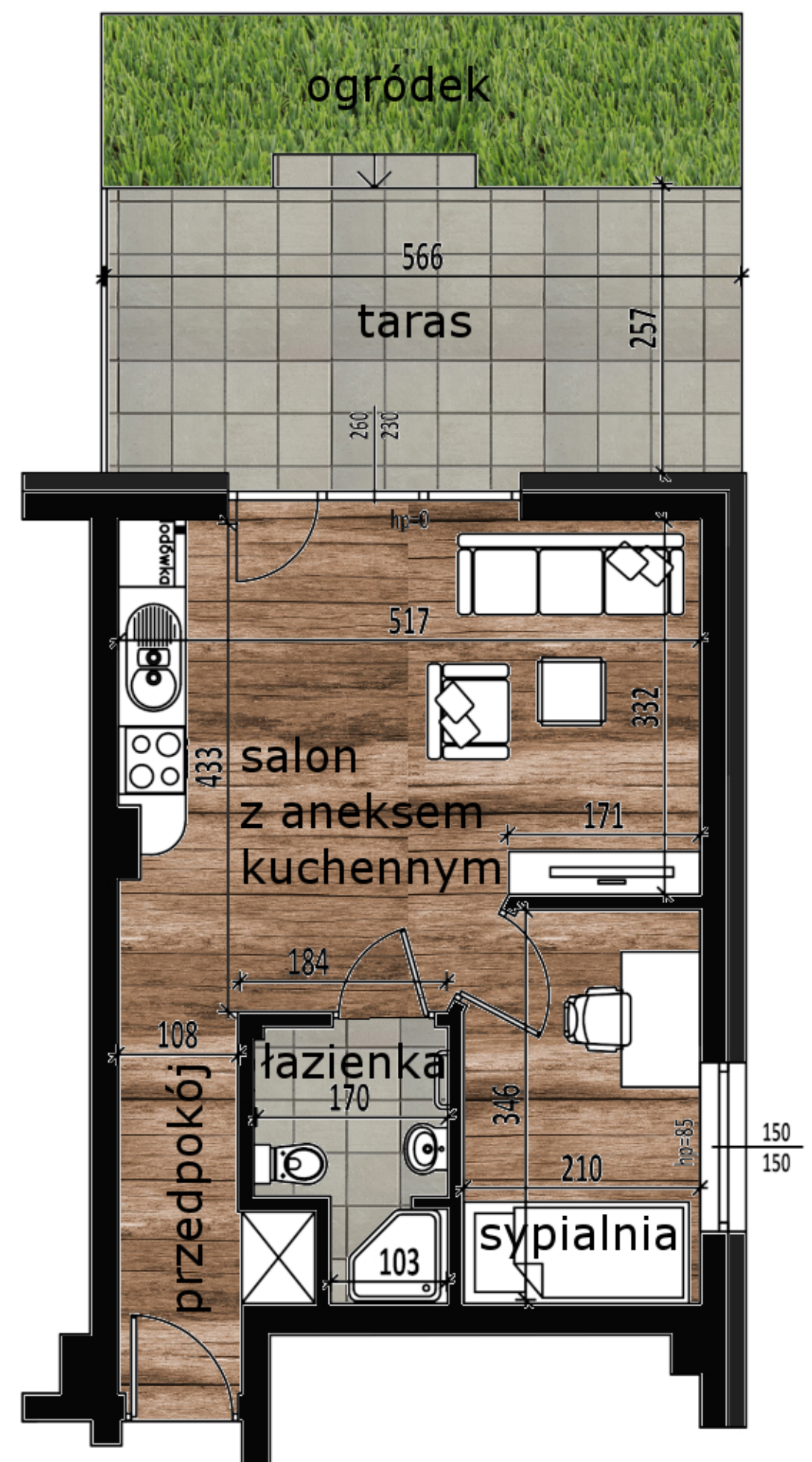
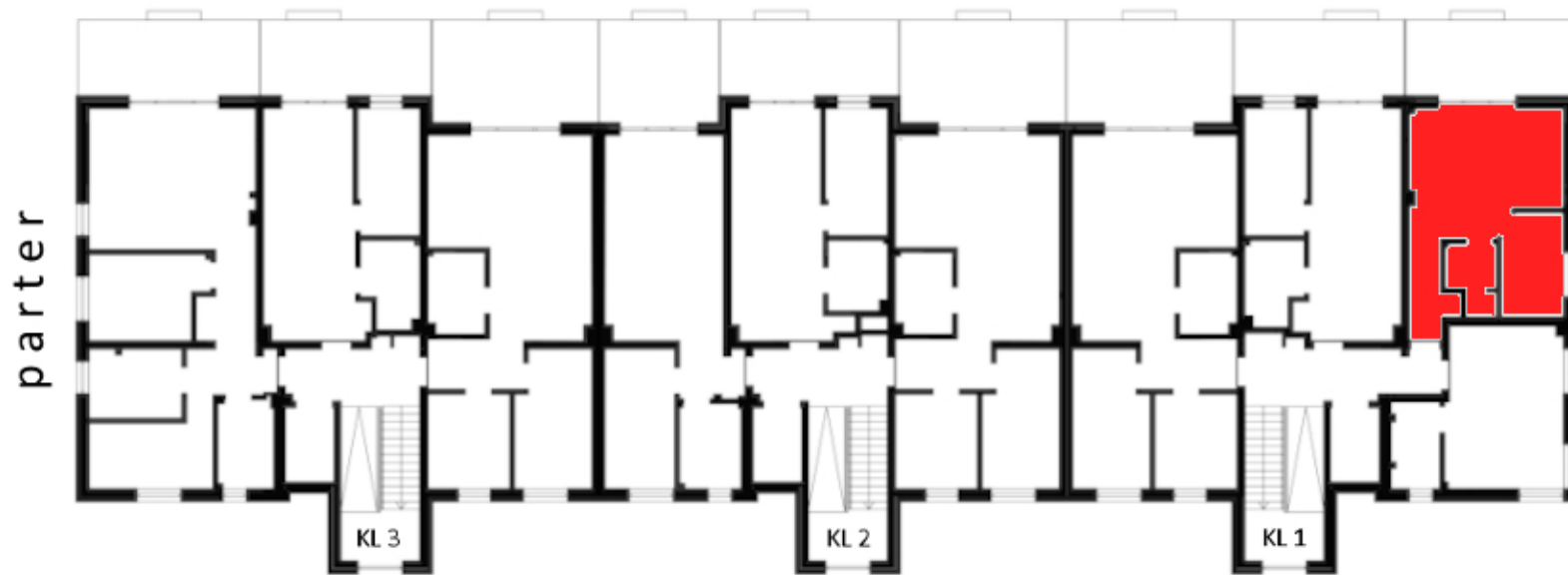
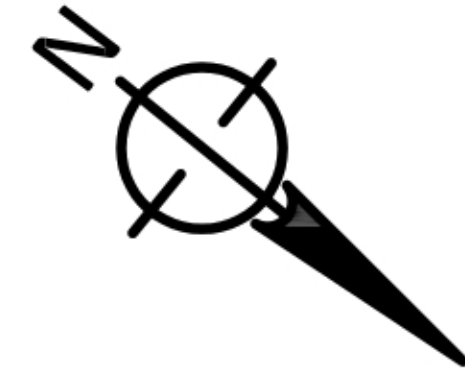


## MALOWNICZE TARASY II WZGÓRZA KRZESŁAWICKIE-UL.G.MORCINKA



**powierzchnia użytkowa 35,13m<sup>2</sup>**

przedpokój	4,22m <sup>2</sup>
salon z aneksem kuchennym	20,41m <sup>2</sup>
łazienka	3,45m <sup>2</sup>
sypialnia	7,05m <sup>2</sup>

+ taras	14,32m <sup>2</sup>
+ ogródek	8,80m <sup>2</sup>