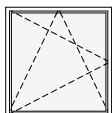
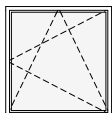


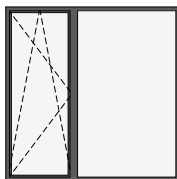
schemat okien w widoku od wewnątrz



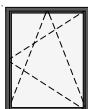
O7c okno z parapetem
hp = 85 cm



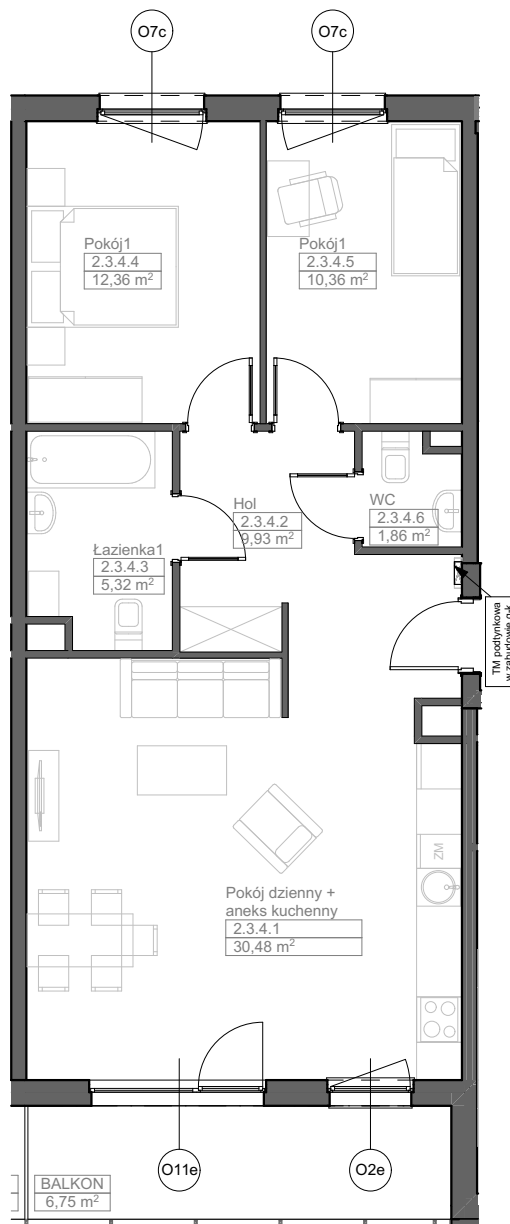
O7c okno z parapetem
hp = 85 cm



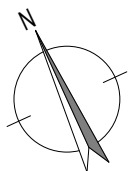
O11e okno balkonowe z naświetlem
hp = 0 cm



O2e okno z parapetem
hp = 90 cm



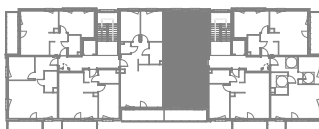
Zadanie VII
Mieszkanie F.2.3.4
Powierzchnia **70,31 m²**
Poziom II PIĘTRO



UWAGI:
1. Powierzchnie mieszkań liczone wg. normy PN-ISO-9836:2015-12 (tolerancja ±5cm)
2. Wysokość parapetu hp - tolerancja ±2cm



NABYWCA



DEWELOPER