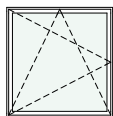
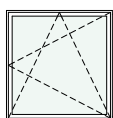


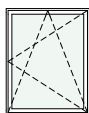
schemat okien w widoku od wewnątrz



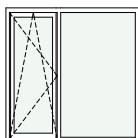
**O1** okno z parapetem  
hp = 85 cm



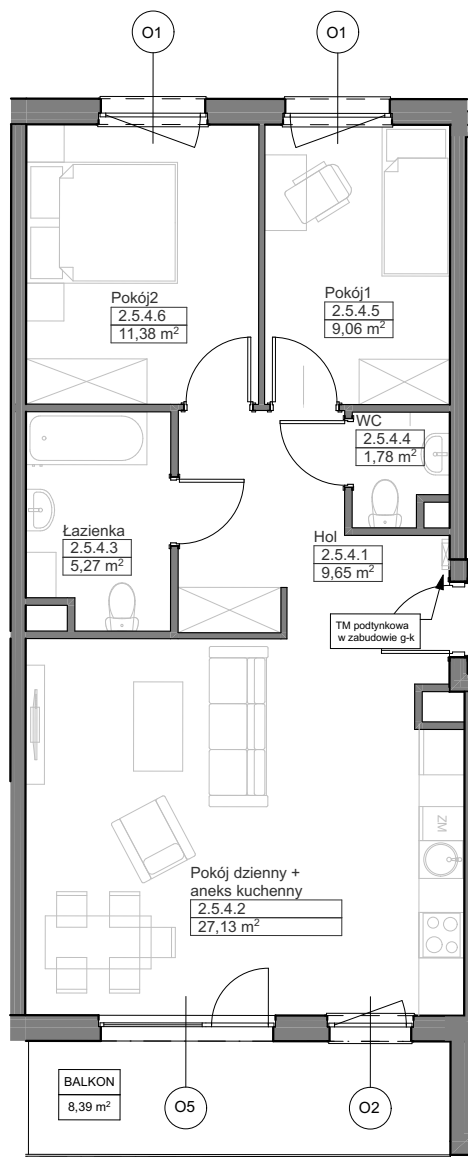
**O1** okno z parapetem  
hp = 85 cm



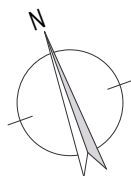
**O2** okno z parapetem  
hp = 90 cm



**O5** okno balkonowe  
z naświetlem  
hp = 0 cm



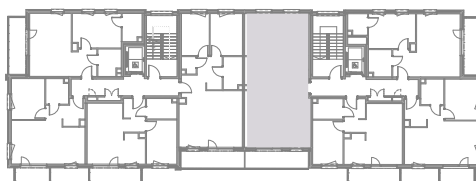
Zadanie VIII  
Mieszkanie B.2.5.4  
Powierzchnia **64,27 m<sup>2</sup>**  
Poziom IV PIĘTRO



UWAGI:  
1. Powierzchnie mieszkań liczone wg. normy PN-ISO-9836:2015-12 (tolerancja ± 5 cm)  
2. Wysokość parapetu hp - tolerancja ± 2 cm



NABYWCA



DEWELOPER