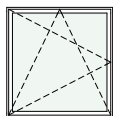
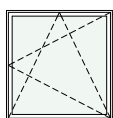


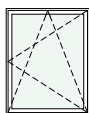
schemat okien w widoku od wewnątrz



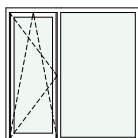
O1 okno z parapetem
hp = 85 cm



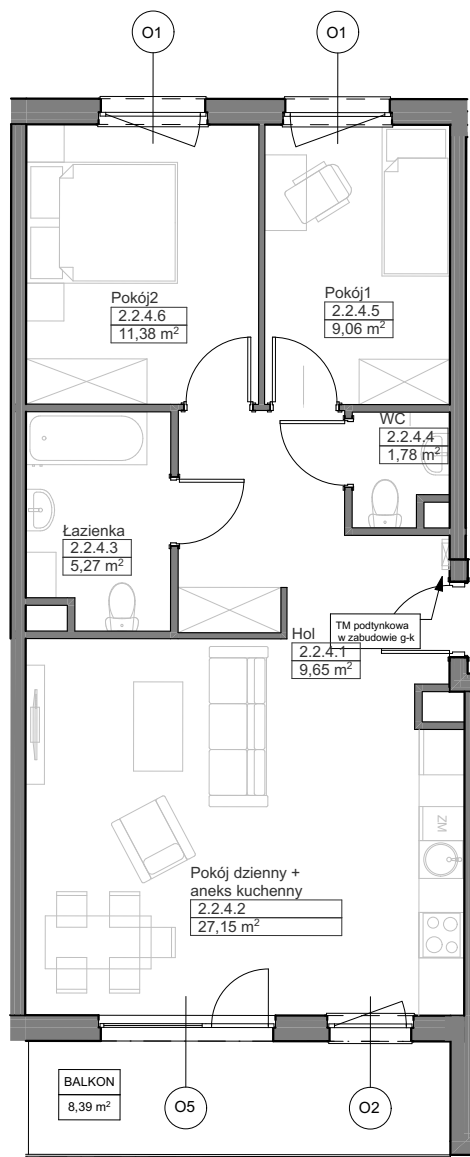
O1 okno z parapetem
hp = 85 cm



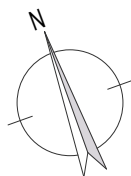
O2 okno z parapetem
hp = 90 cm



O5 okno balkonowe
z naświetlem
hp = 0 cm



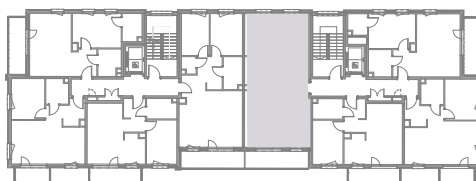
Zadanie VIII
Mieszkanie B.2.2.4
Powierzchnia **64,29 m²**
Poziom I PIĘTRO



UWAGI:
1. Powierzchnie mieszkań liczone wg. normy PN-ISO-9836:2015-12 (tolerancja ± 5 cm)
2. Wysokość parapetu hp - tolerancja ± 2 cm



NABYWCA



DEWELOPER