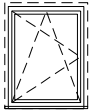
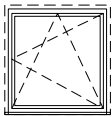


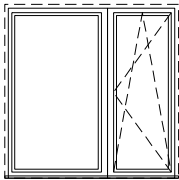
schemat okien w widoku od wewnątrz



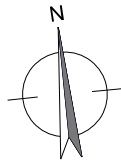
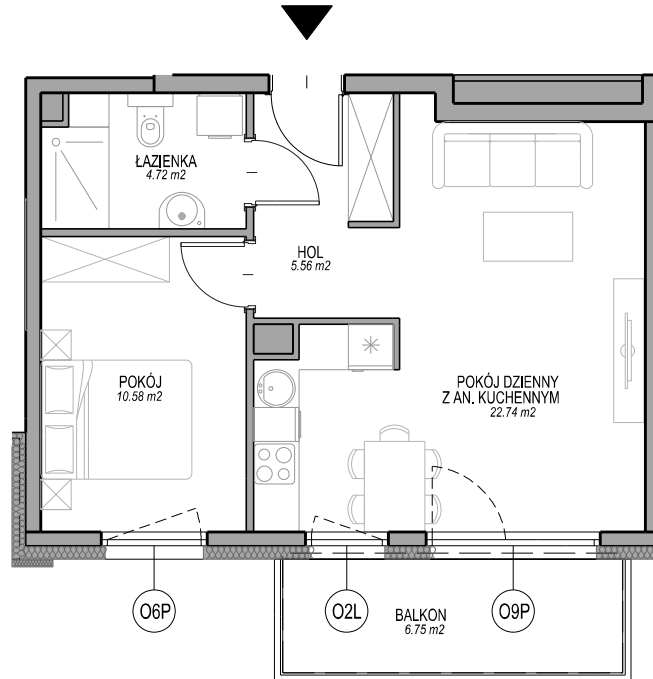
O2L okno z parapetem



O6P okno z parapetem



O9P okno balkonowe z naswietleniem

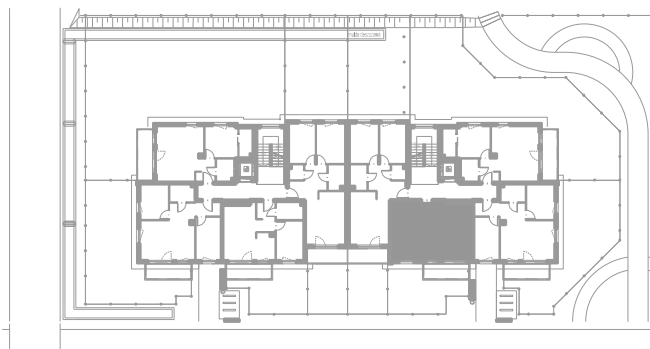


Zadanie VI
Mieszkanie O.1.2.3
Powierzchnia 43,6 m²
Poziom I PIĘTRO

UWAGI:
1. Powierzchnie mieszkań liczone wg. normy PN-ISO - 9836 : 1997 (tolerancja ±5cm)



KUPUJĄCY



DEWELOPER