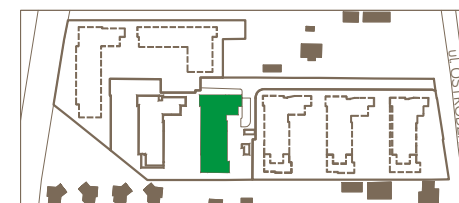
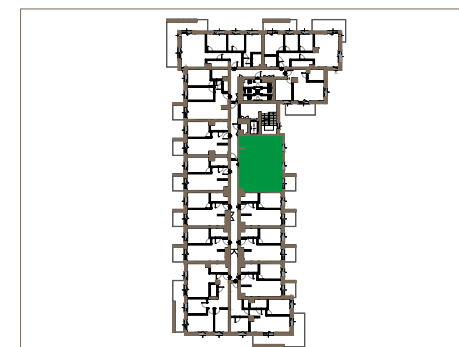
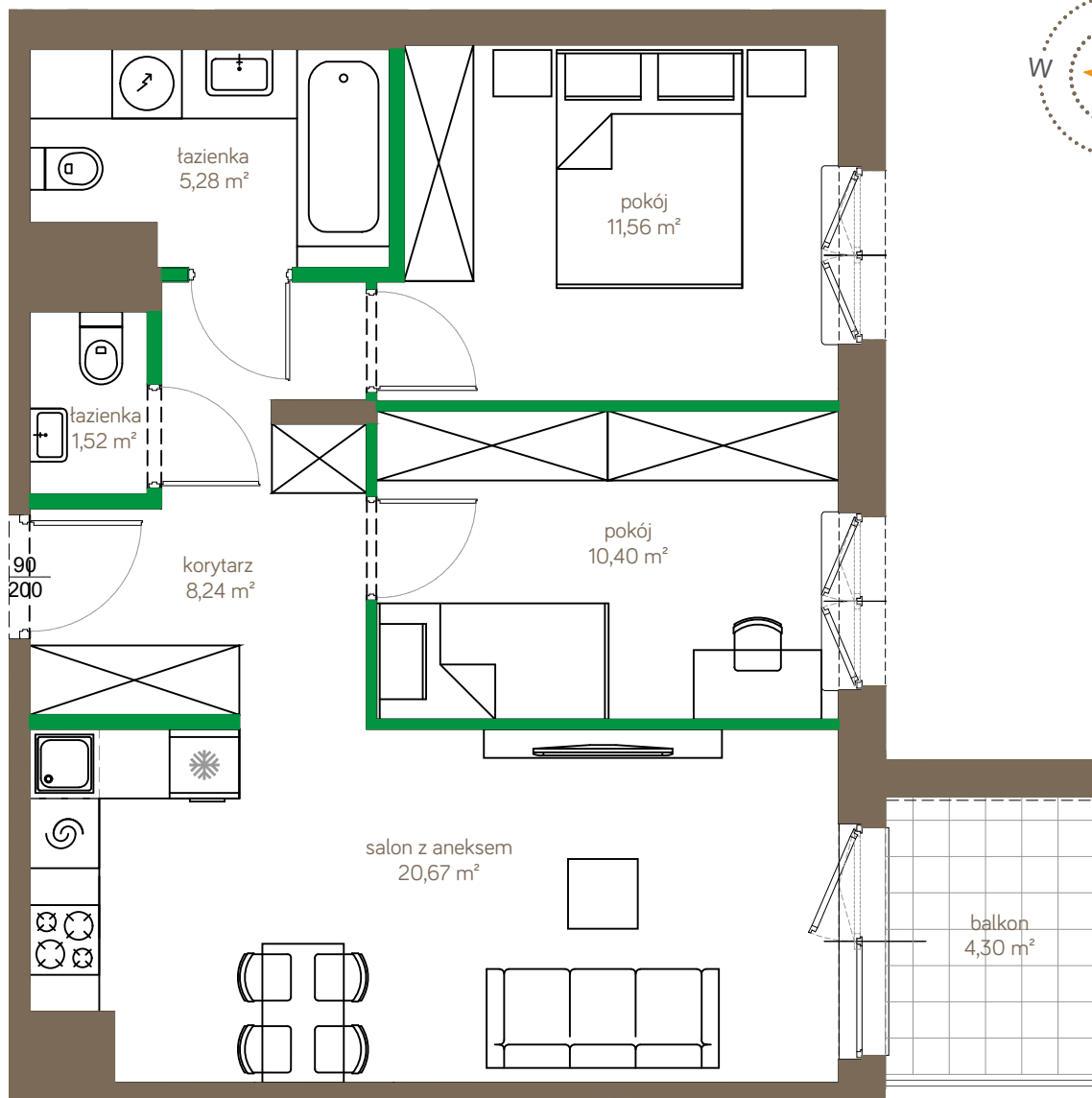


123C			
P	1	2	3
-	-	C/29	-

powierzchnia	57,67m ²
pokoje	3

korytarz	8,24m ²
salon z aneksem	20,67m ²
pokój	11,56m ²
pokój	10,40m ²
łazienka	5,28m ²
łazienka	1,52m ²
balkon	4,30m ²



ściany możliwe do demontażu
ściany niedemontowalne