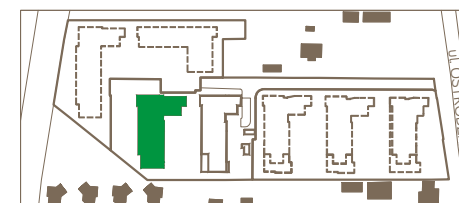
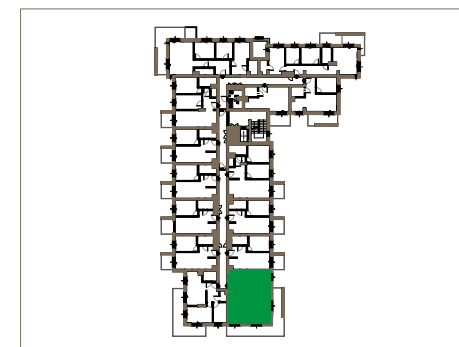
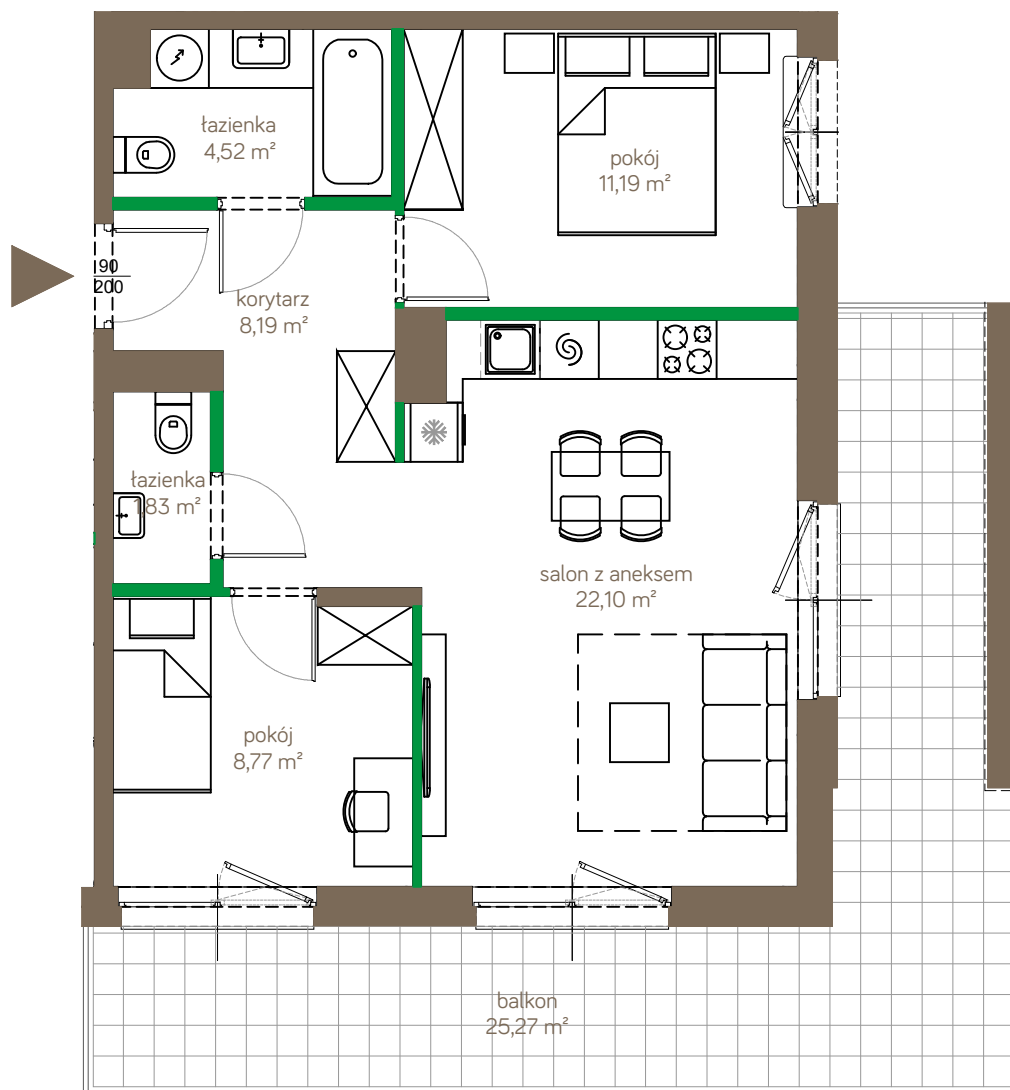


123D			
P	1	2	3
-	D/17	-	-

powierzchnia	56,60m <sup>2</sup>
pokoje	3

korytarz	8,19m <sup>2</sup>
salon z aneksem	22,10m <sup>2</sup>
pokój	11,19m <sup>2</sup>
pokój	8,77m <sup>2</sup>
łazienka	4,52m <sup>2</sup>
łazienka	1,83m <sup>2</sup>
balkon	25,27m <sup>2</sup>



ściany możliwe do demontażu  
ściany niedemontowalne