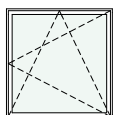
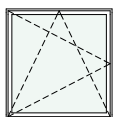


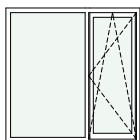
schemat okien w widoku od wewnątrz



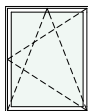
O1 okno z parapetem  
hp = 85 cm



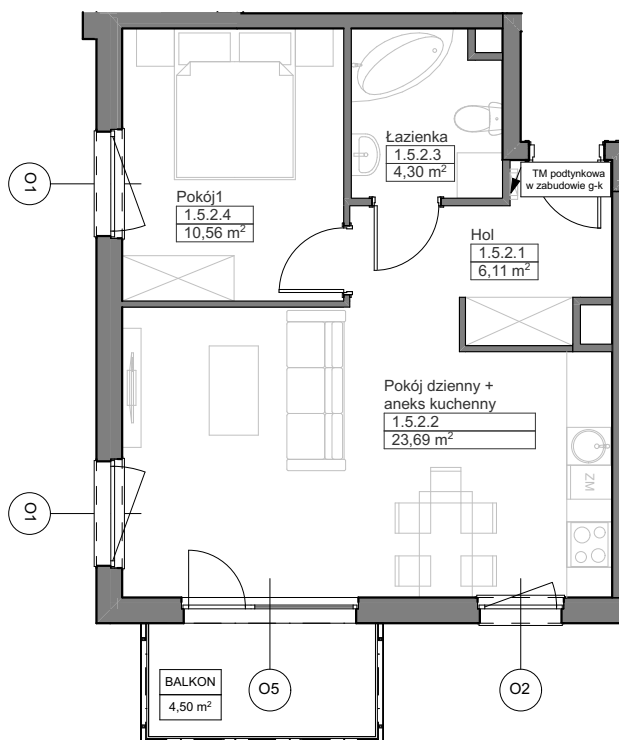
O1 okno z parapetem  
hp = 85 cm



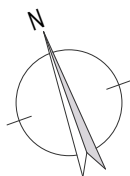
O5 okno balkonowe  
z nasświetłem  
hp = 0 cm



O2 okno z parapetem  
hp = 90 cm



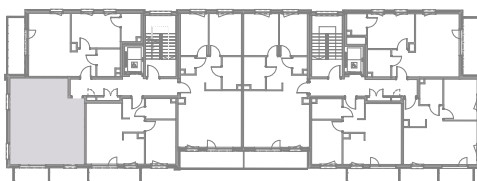
Zadanie VIII  
Mieszkanie B.1.5.2  
Powierzchnia **44,66 m<sup>2</sup>**  
Poziom IV PIĘTRO



UWAGI:  
1. Powierzchnie mieszkań liczone wg. normy PN-ISO-9836:2015-12 (tolerancja ± 5 cm)  
2. Wysokość parapetu hp - tolerancja ± 2 cm



NABYWCA



DEWELOPER