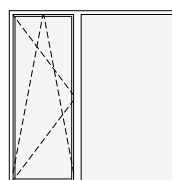
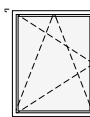
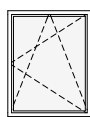
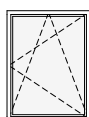
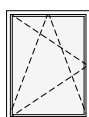


schemat okien w widoku od wewnątrz



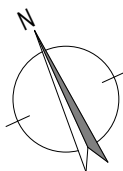
O3c okno z parapetem
hp = 85 cm

O3c okno z parapetem
hp = 85 cm

O1a okno z parapetem
hp = 90 cm

O1d okno z parapetem
hp = 90 cm

O10d okno balkonowe z naswietlaniem
hp = 0 cm

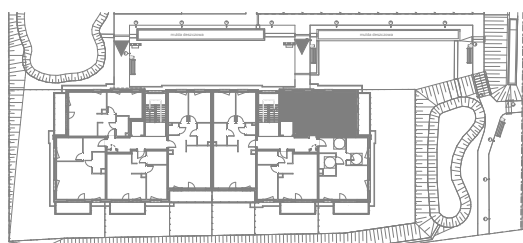


Zadanie VII
Mieszkanie F.2.4.1
Powierzchnia **50,61 m²**
Poziom III PIĘTRO

UWAGI:
1. Powierzchnie mieszkań liczone wg. normy PN-ISO-9836:2015-12 (tolerancja ±5cm)
2. Wysokość parapetu hp - tolerancja ±2cm



NABYWCA



DEWELOPER