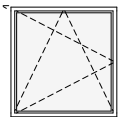
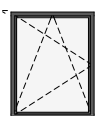


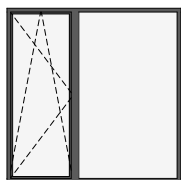
schemat okien w widoku od wewnątrz



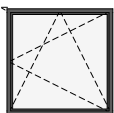
O7c okno z parapetem
hp = 85 cm



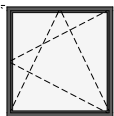
O2e okno z parapetem
hp = 90 cm



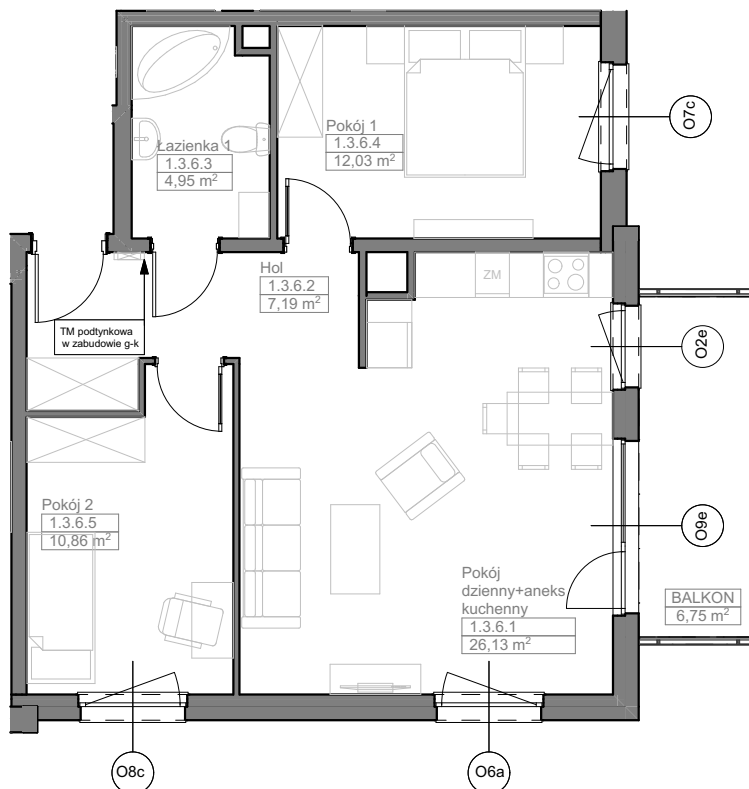
O9e okno balkonowe z nasłwitem
hp = 0 cm



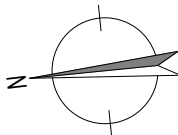
O6a okno z parapetem
hp = 90 cm



O8c okno z parapetem
hp = 85 cm



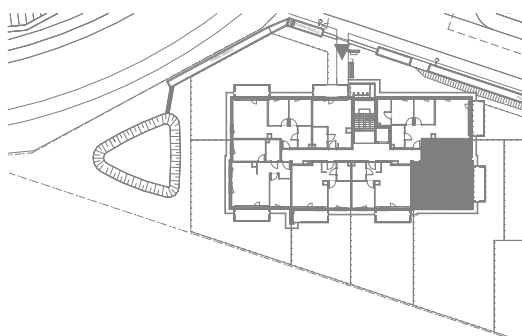
Zadanie VII
Mieszkanie B.1.3.6
Powierzchnia **61,16 m²**
Poziom II PIĘTRO



UWAGI:
1. Powierzchnie mieszkań liczone wg. normy PN-ISO-9836:2015-12 (tolerancja ± 5 cm)
2. Wysokość parapetu hp - tolerancja ± 2 cm



NABYWCA



DEWELOPER