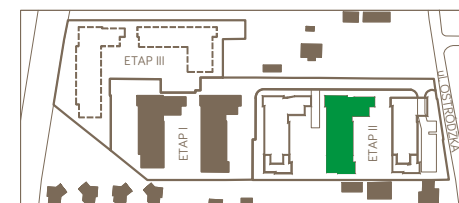
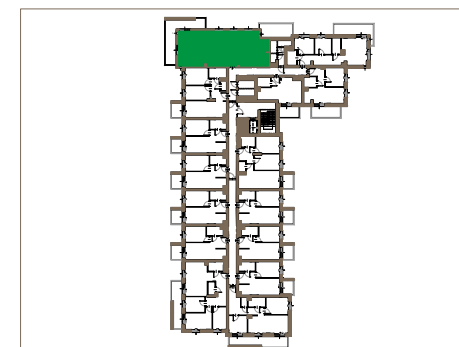
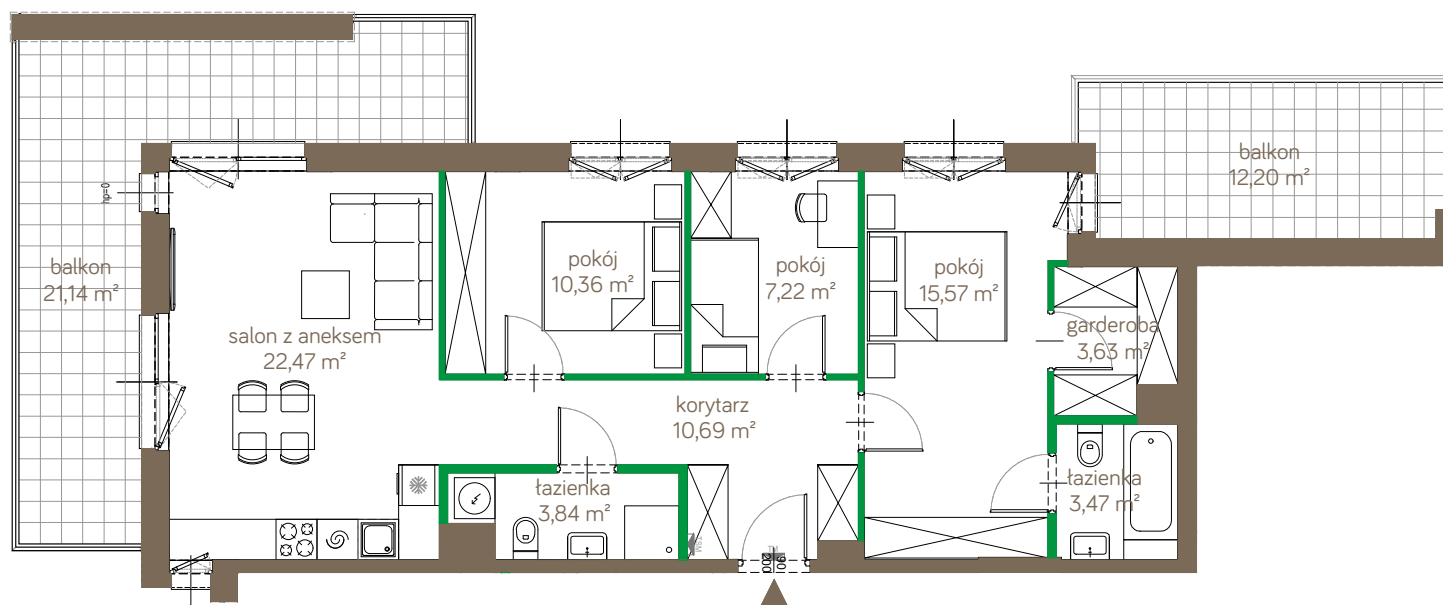


## 123A/ETAP II

P	1	2	3
-	A/28	A/43	A/55

powierzchnia	77,25m <sup>2</sup>
pokoje	4

korytarz	10,69m <sup>2</sup>
salon z aneksem	22,47m <sup>2</sup>
pokój	15,57m <sup>2</sup>
pokój	10,36m <sup>2</sup>
pokój	7,22m <sup>2</sup>
łazienka	3,84m <sup>2</sup>
łazienka	3,47m <sup>2</sup>
garderoba	3,63m <sup>2</sup>
balkon	21,14m <sup>2</sup>
balkon	12,20m <sup>2</sup>



ściany możliwe do demontażu  
ściany niedemontowalne