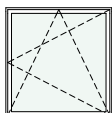
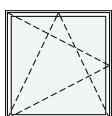


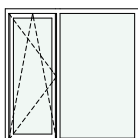
schemat okien w widoku od wewnątrz



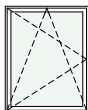
O1 okno z parapetem
hp = 85 cm



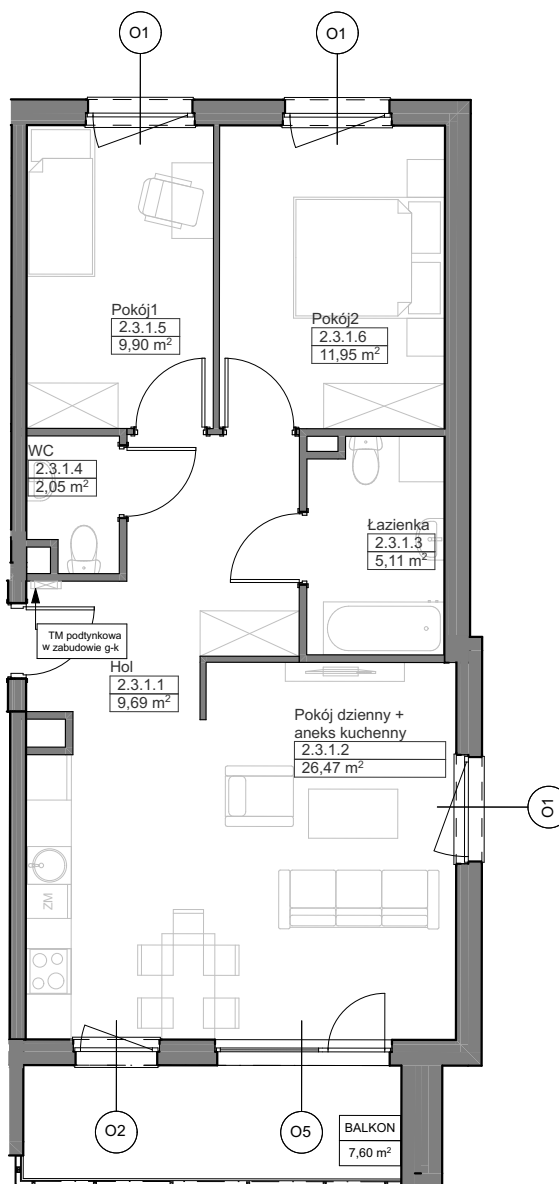
O1 okno z parapetem
hp = 85 cm



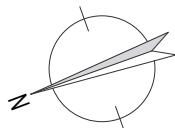
O5 okno balkonowe
z naświetlem
hp = 0 cm



O2 okno z parapetem
hp = 90 cm



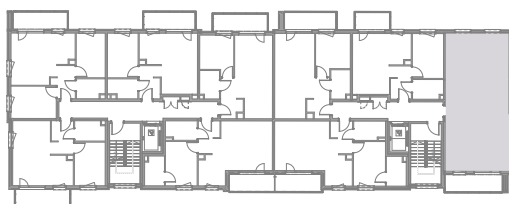
Zadanie VIII
Mieszkanie A.2.3.1
Powierzchnia **65,17 m²**
Poziom II PIĘTRO



UWAGI:
1. Powierzchnie mieszkań liczone wg. normy PN-ISO-9836:2015-12 (tolerancja ± 5 cm)
2. Wysokość parapetu hp - tolerancja ± 2 cm



NABYWCA



DEWELOPER