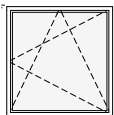


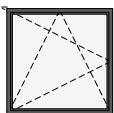
schemat okien w widoku od wewnątrz



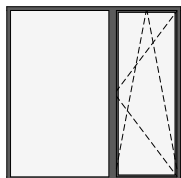
O7c okno z parapetem  
hp = 85 cm



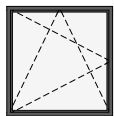
O2d okno z parapetem  
hp = 90 cm



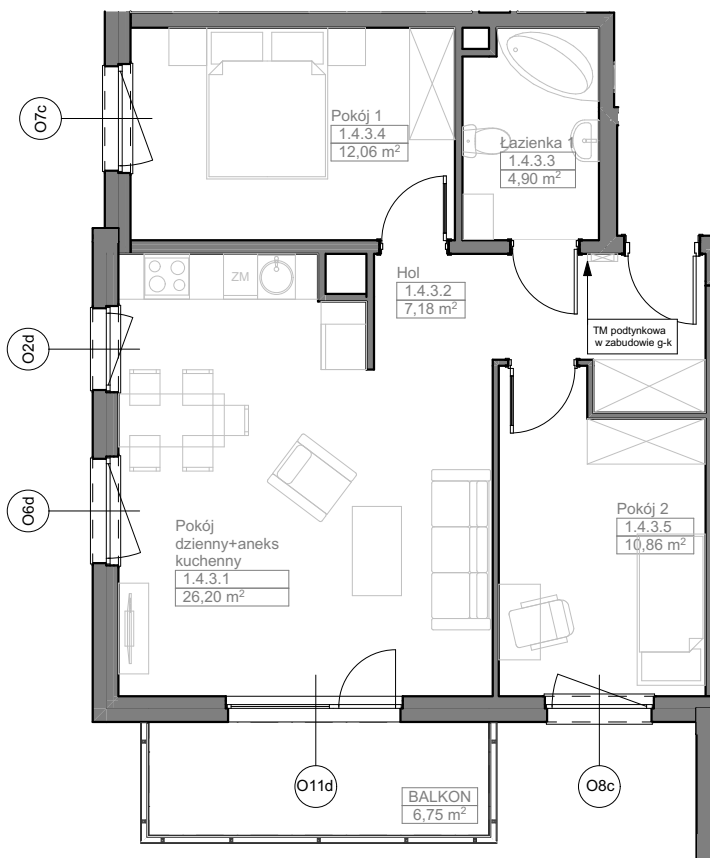
O6d okno z parapetem  
hp = 90 cm



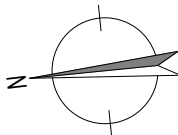
O11d okno balkonowe  
z naświetlem  
hp = 0 cm



O8c okno z parapetem  
hp = 85 cm



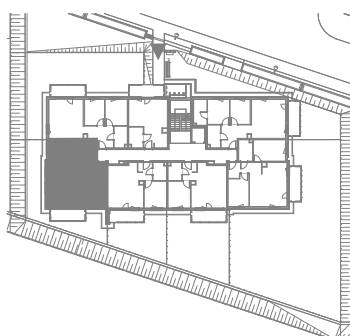
Zadanie VII  
Mieszkanie E.1.4.3  
Powierzchnia **61,20 m<sup>2</sup>**  
Poziom III PIĘTRO



UWAGI:  
1. Powierzchnie mieszkań liczone wg. normy PN-ISO-9836:2015-12 (tolerancja ± 5 cm)  
2. Wysokość parapetu hp - tolerancja ± 2 cm



NABYWCA



DEWELOPER