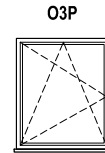
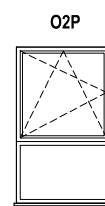


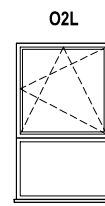
SCHEMAT OKIEN W WIDOKU OD ZEWNĄTRZ



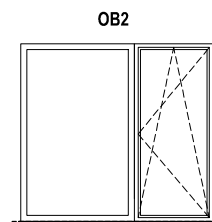
$H_p = 88.5 \text{ cm}^*$



$H_p = 28.5 \text{ cm}^*$



$H_p = 28.5 \text{ cm}^*$

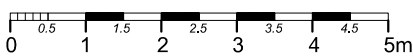
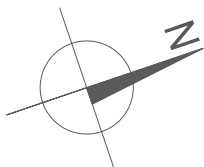


Okno balkonowe  
 $H_p = 0 \text{ cm}^*$

\*  $h_p$  - wysokość parapetu mierzona od niewykończonego poziomu podłogi

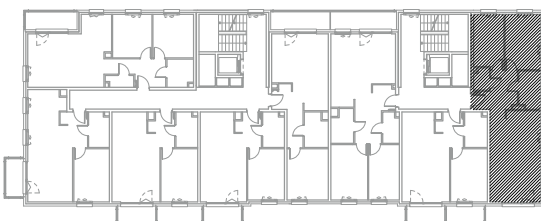
UWAGI:

1. Powierzchnie mieszkań liczone wg. normy PN-ISO - 9836 : 1997 (tolerancja  $\pm 5\text{cm}$ )



ZADANIE III  
MIESZKANIE A.2.4.1  
POWIERZCHNIA 66.30 m<sup>2</sup>  
POZIOM 3 PIĘTRO

RZUT BUDYNKU A



RZUT OSIEDLA

