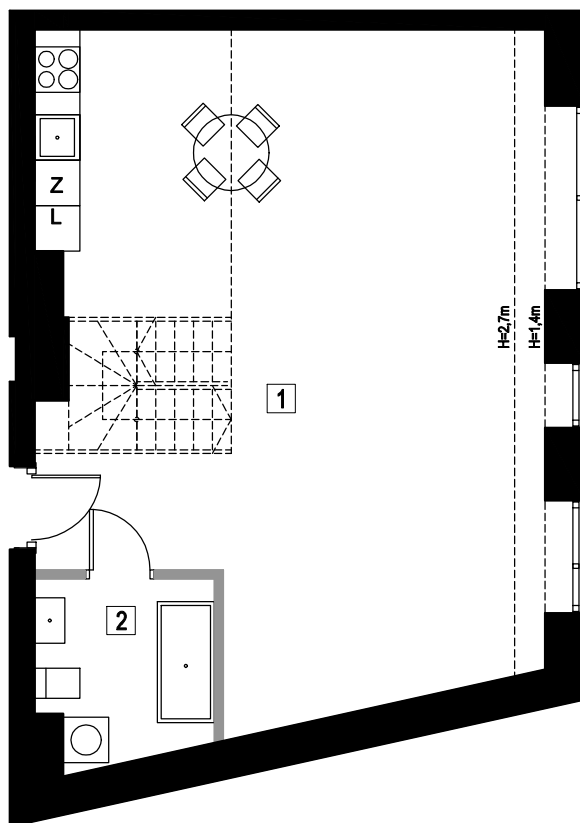
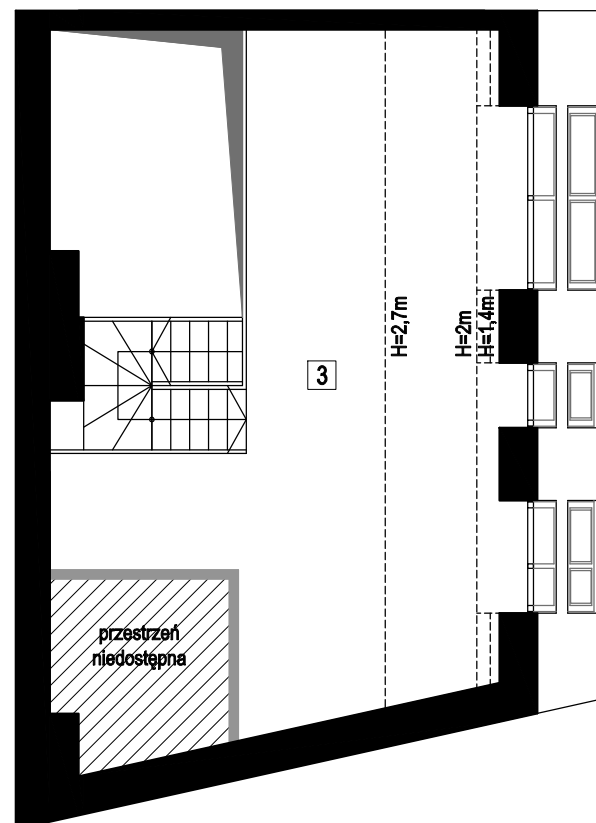


MIESZKANIE 5.12

POZIOM 1



ANTRESOLA



1	POKÓJ DZIENNY Z ANEKSEM KUCHENNYM	53,99 m ²
2	ŁAZIENKA	5,45 m ²
SUMA		59,44 m ²
3	ANTRESOLA	31,60 m ²
SUMA P1 + ANTRESOLA		91,04 m ²