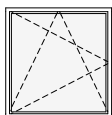
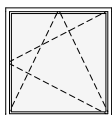


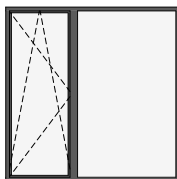
schemat okien w widoku od wewnątrz



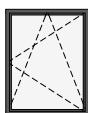
O7c okno z parapetem  
hp = 85 cm



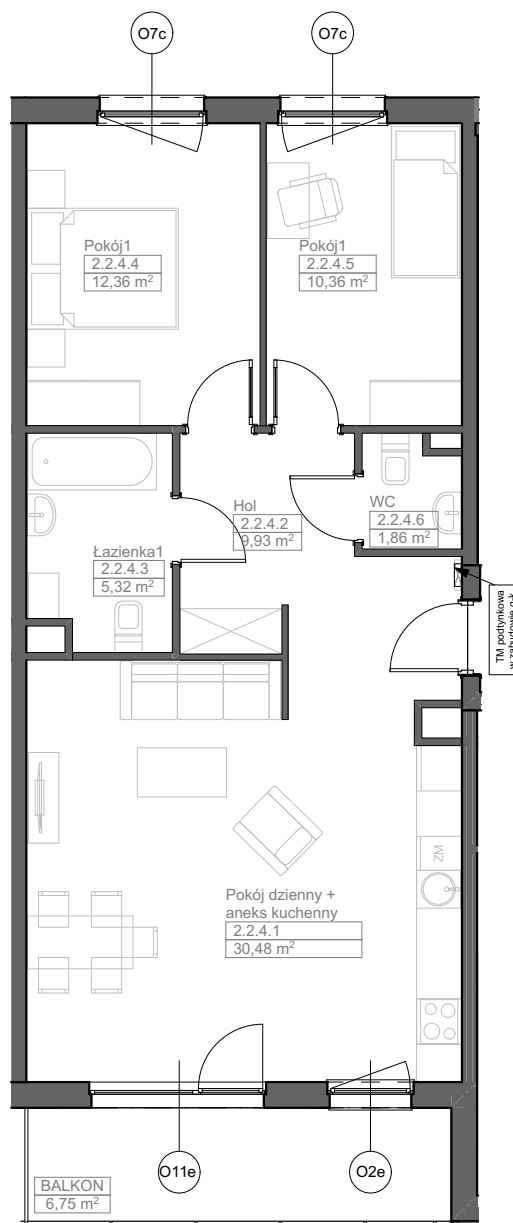
O7c okno z parapetem  
hp = 85 cm



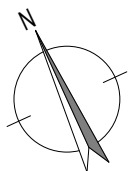
O11e okno balkonowe z naświetlem  
hp = 0 cm



O2e okno z parapetem  
hp = 90 cm



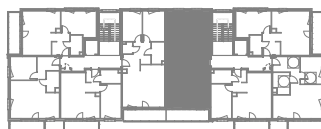
Zadanie VII  
Mieszkanie F.2.2.4  
Powierzchnia 70,31 m<sup>2</sup>  
Poziom I PIĘTRO



UWAGI:  
1. Powierzchnie mieszkań liczone wg. normy PN-ISO-9836:2015-12 (tolerancja ±5cm)  
2. Wysokość parapetu hp - tolerancja ±2cm



NABYWCA



DEWELOPER