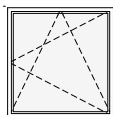
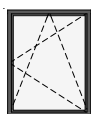


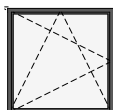
schemat okien w widoku od wewnątrz



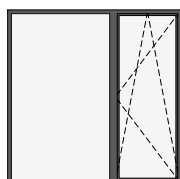
O7c okno z parapetem
hp = 85 cm



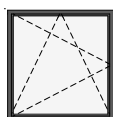
O2d okno z parapetem
hp = 90 cm



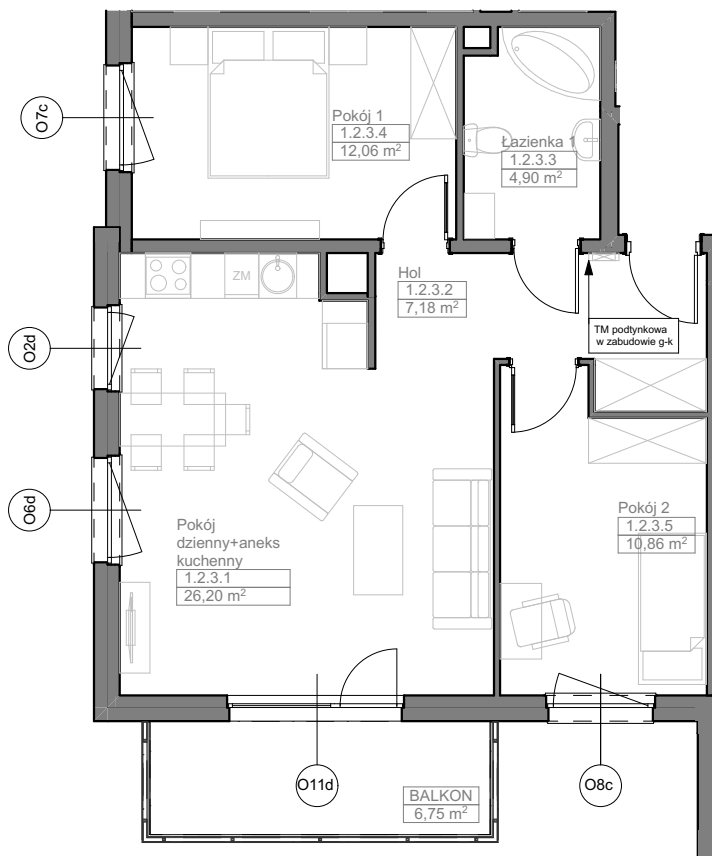
O6d okno z parapetem
hp = 90 cm



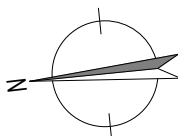
O11d okno balkonowe
z naświetlem
hp = 0 cm



O8c okno z parapetem
hp = 85 cm



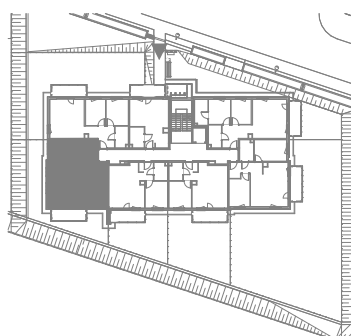
Zadanie VII
Mieszkanie E.1.2.3
Powierzchnia **61,20 m²**
Poziom I PIĘTRO



UWAGI:
1. Powierzchnie mieszkań liczone wg. normy PN-ISO-9836:2015-12 (tolerancja ± 5 cm)
2. Wysokość parapetu hp - tolerancja ± 2 cm



NABYWCA



DEWELOPER