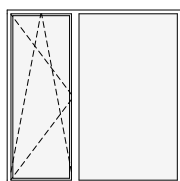
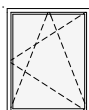


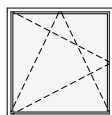
schemat okien w widoku od wewnątrz



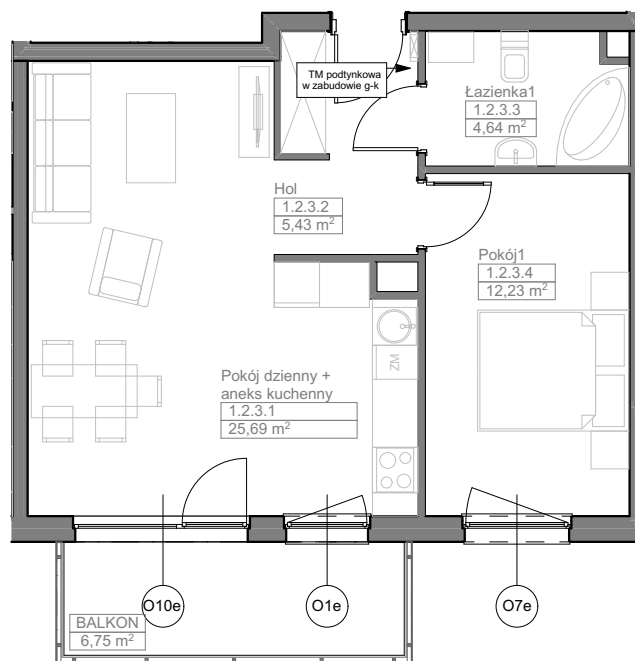
**O10e** okno balkonowe z naświetlem  
hp = 0 cm



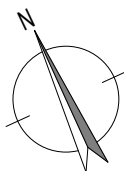
**O1e** okno z parapetem  
hp = 90 cm



**O7e** okno z parapetem  
hp = 85 cm



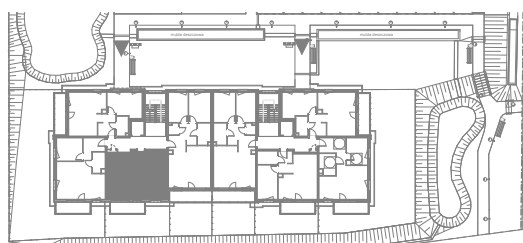
Zadanie VII  
Mieszkanie F.1.2.3  
Powierzchnia **47,99 m<sup>2</sup>**  
Poziom I PIĘTRO



UWAGI:  
1. Powierzchnie mieszkań liczone wg. normy PN-ISO-9836:2015-12 (tolerancja ±5cm)  
2. Wysokość parapetu hp - tolerancja ±2cm



NABYWCA



DEWELOPER