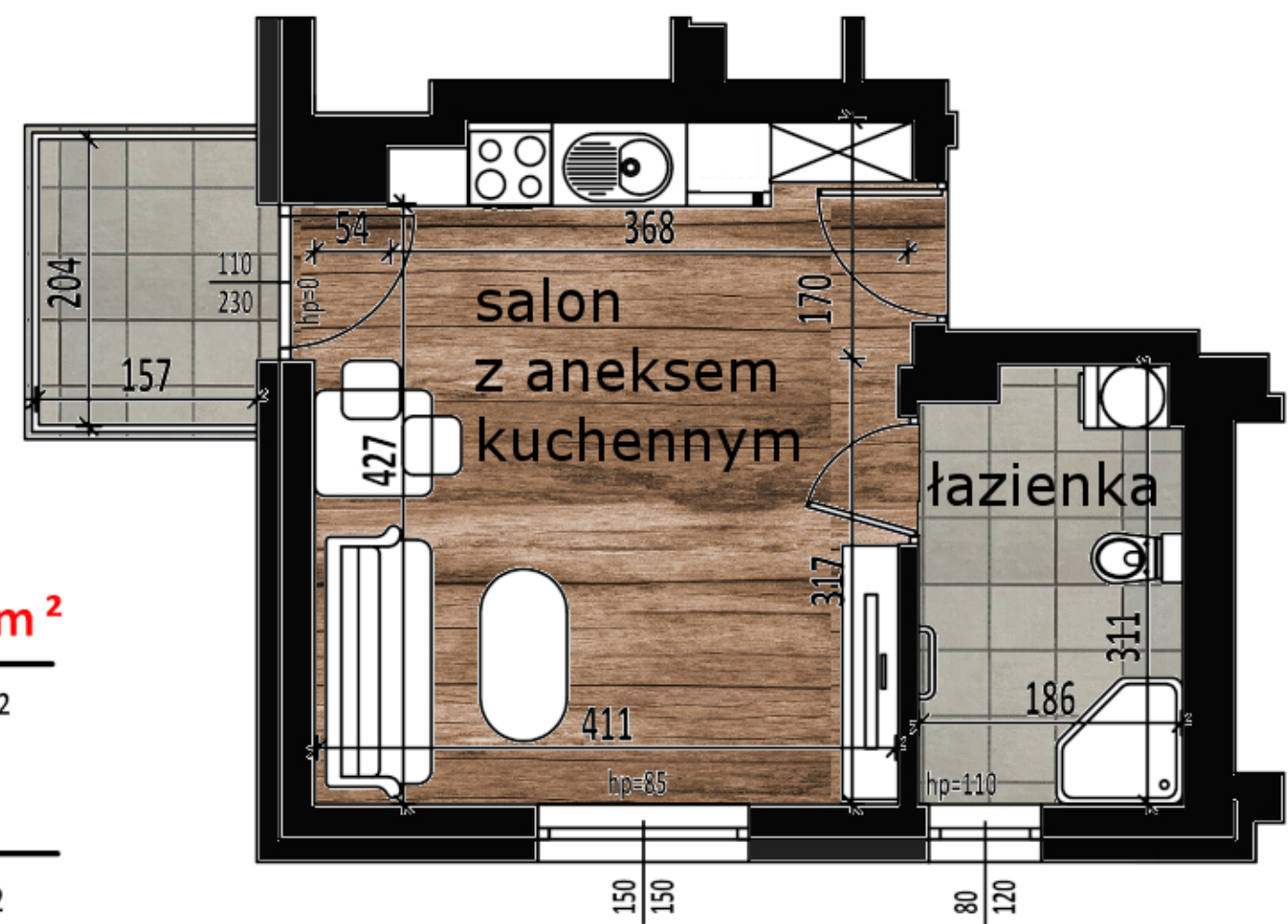
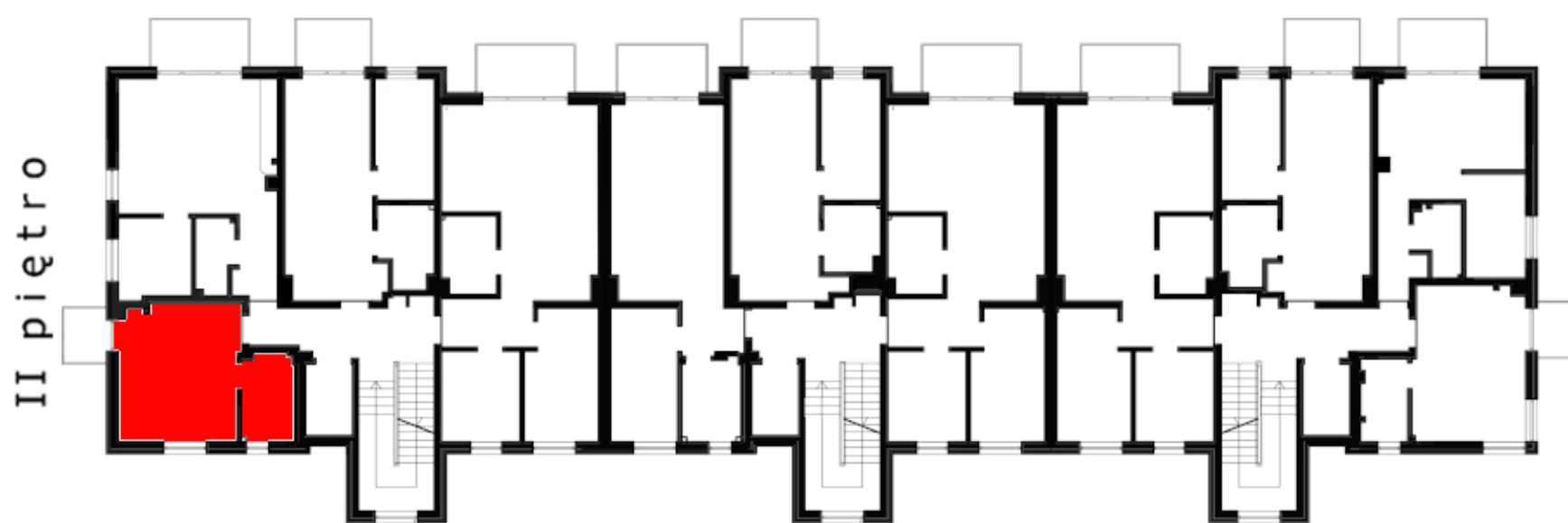
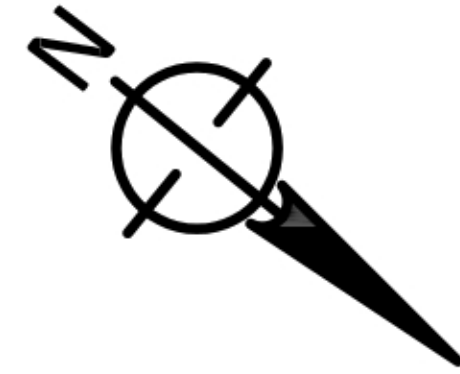


## MALOWNICZE TARASY II WZGÓRZA KRZESŁAWICKIE-UL.G.MORCINKA



**powierzchnia użytkowa 25,48m<sup>2</sup>**

salon z aneksem kuchennym	19,88m <sup>2</sup>
łazienka	5,60m <sup>2</sup>

+ balkon	3,20m <sup>2</sup>
----------	--------------------