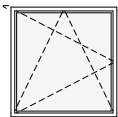
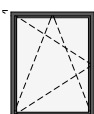


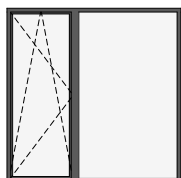
schemat okien w widoku od wewnątrz



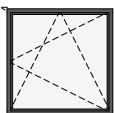
**O7c** okno z parapetem  
hp = 85 cm



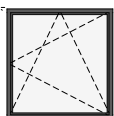
**O2e** okno z parapetem  
hp = 90 cm



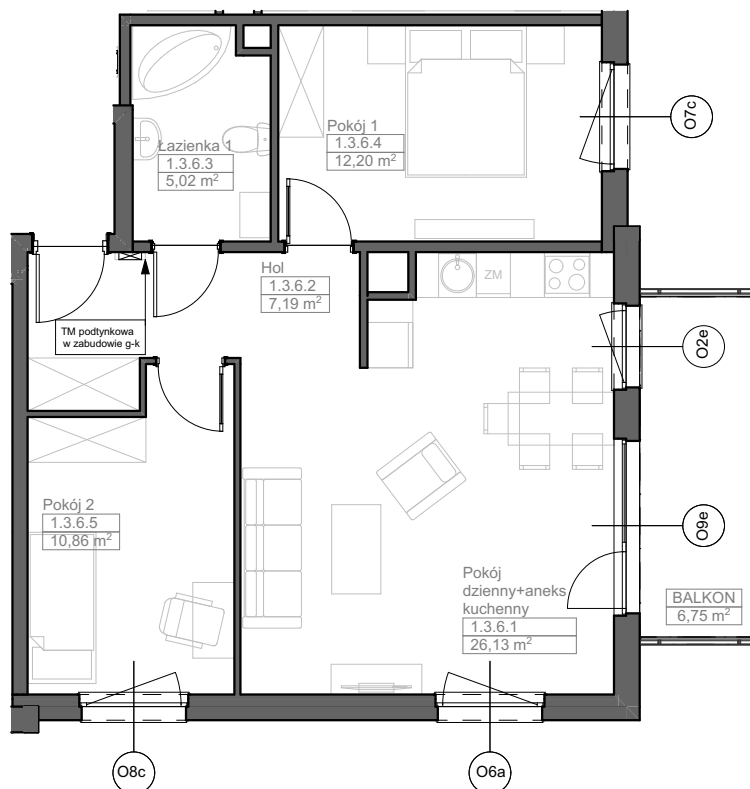
**O9e** okno balkonowe z nasłwitem  
hp = 0 cm



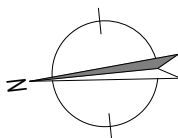
**O6a** okno z parapetem  
hp = 90 cm



**O8c** okno z parapetem  
hp = 85 cm



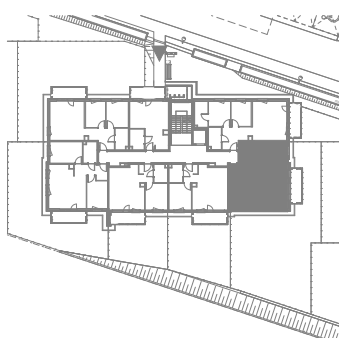
Zadanie VII  
Mieszkanie C.1.3.6  
Powierzchnia **61,40 m<sup>2</sup>**  
Poziom II PIĘTRO



UWAGI:  
1. Powierzchnie mieszkań liczone wg. normy PN-ISO-9836:2015-12 (tolerancja ± 5 cm)  
2. Wysokość parapetu hp - tolerancja ± 2 cm



NABYWCA



DEWELOPER