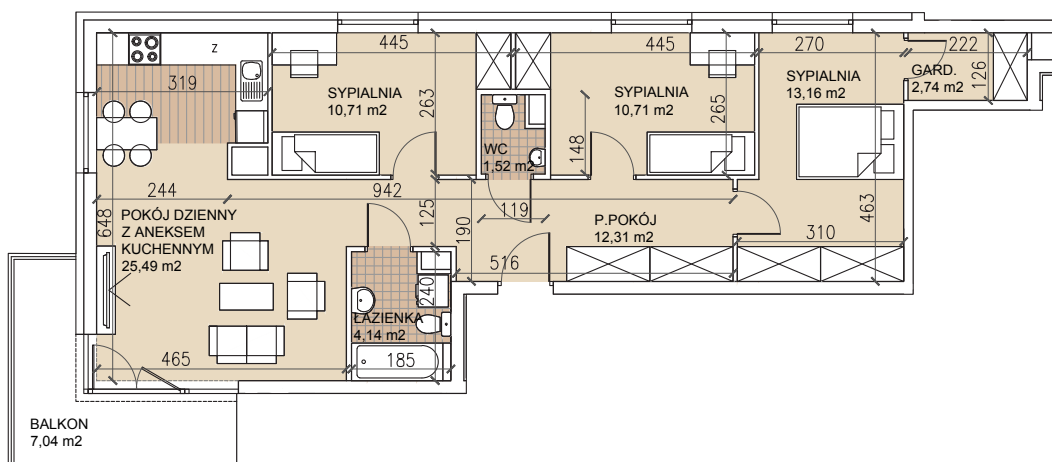
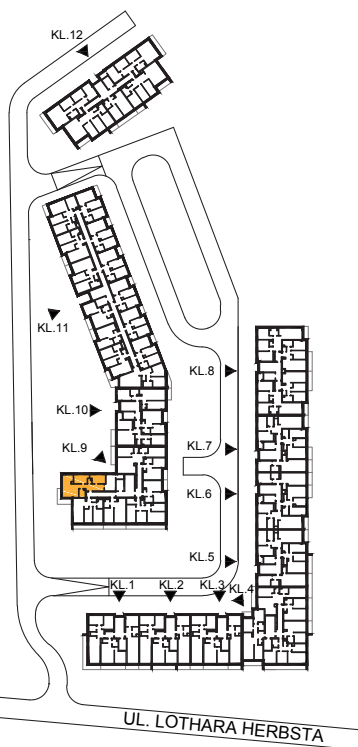


ul. Lothara Herbsta



powierzchnia użytkowa **80,78** m<sup>2</sup>

|                               |                      |
|-------------------------------|----------------------|
| pokój dzienny z aneksem kuch. | 25,49 m <sup>2</sup> |
| sypialnia                     | 13,16 m <sup>2</sup> |
| sypialnia                     | 10,71 m <sup>2</sup> |
| sypialnia                     | 10,71 m <sup>2</sup> |
| garderoba                     | 2,74 m <sup>2</sup>  |
| łazienka                      | 4,14 m <sup>2</sup>  |
| wc                            | 1,52 m <sup>2</sup>  |
| przedpokój                    | 12,31 m <sup>2</sup> |
| balkon                        | 7,04 m <sup>2</sup>  |

