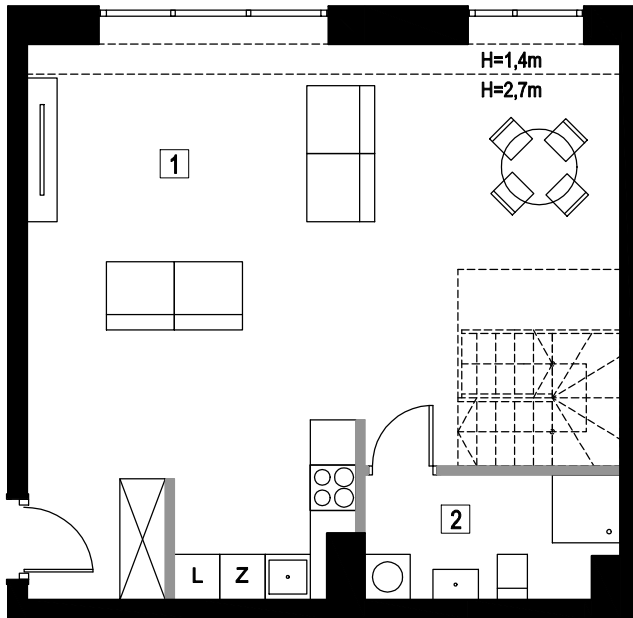
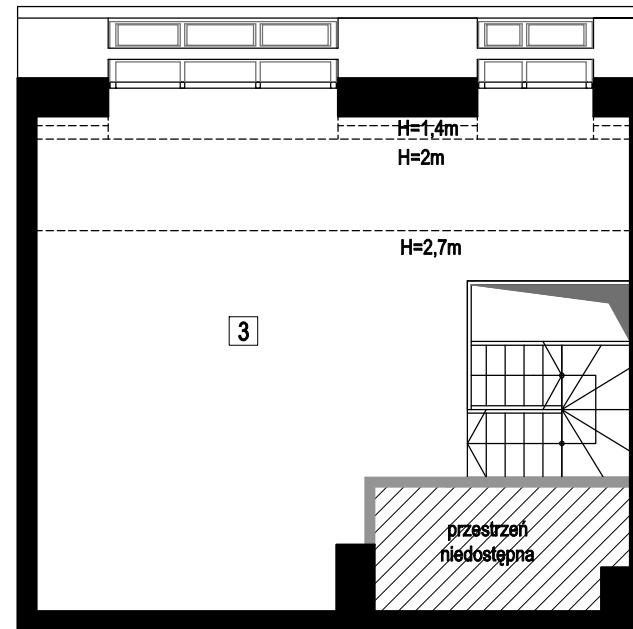


# MIESZKANIE 5.3

## POZIOM 1



## ANTRESOLA



1	POKÓJ DZIENNY Z ANEKSEM KUCHENNYM	49,92 m <sup>2</sup>
2	ŁAZIENKA	5,37m <sup>2</sup>
SUMA		55,29 m <sup>2</sup>
3	ANTRESOLA	36,73 m <sup>2</sup>
SUMA P1 + ANTRESOLA		92,02 m <sup>2</sup>