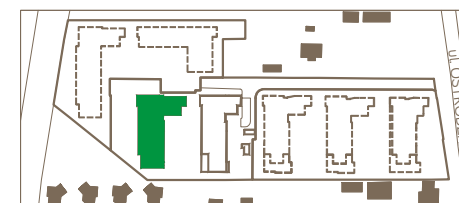
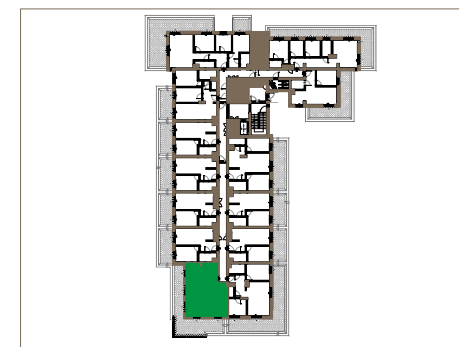
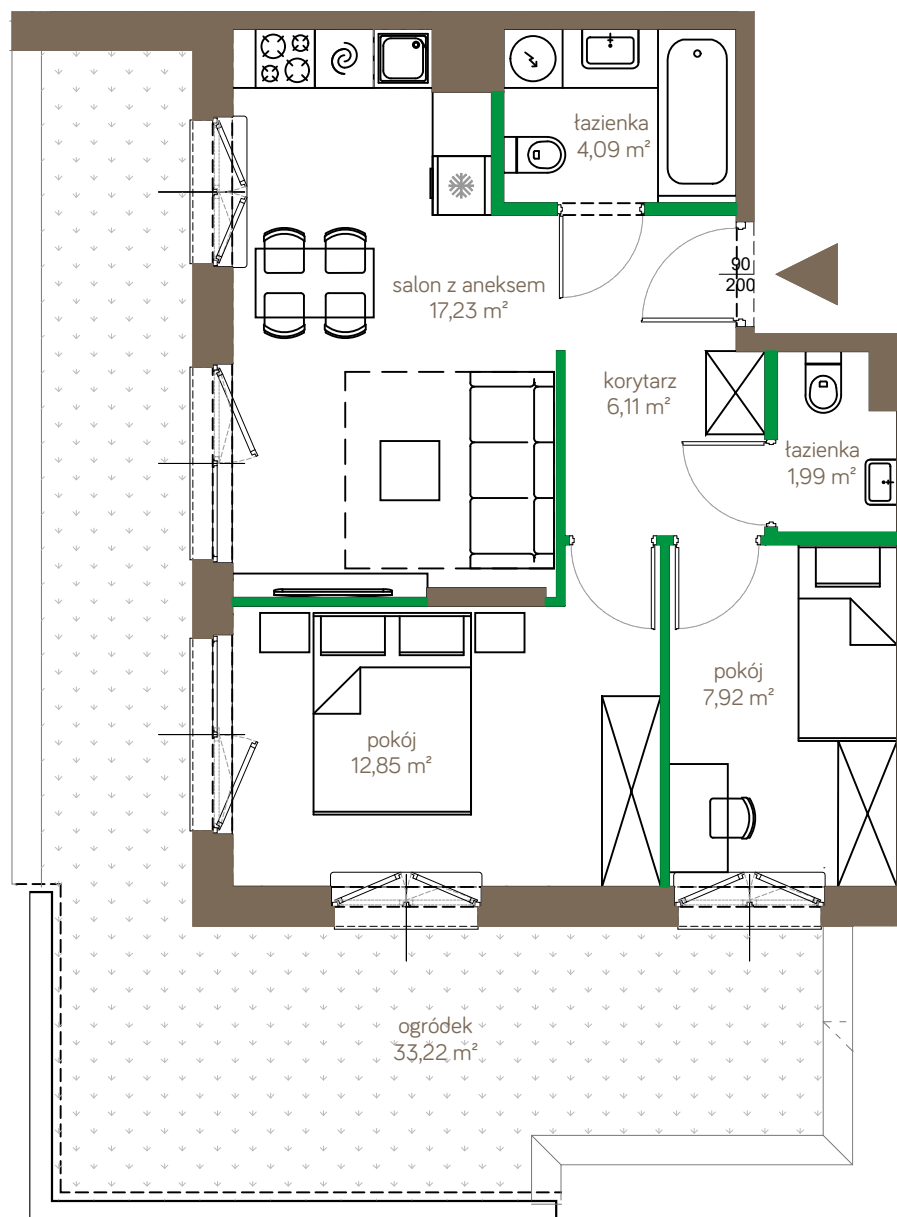


123D			
P	1	2	3
D/5	D/18	D/32	-

powierzchnia	50,19m <sup>2</sup>
pokoje	3

korytarz	6,11m <sup>2</sup>
salon z aneksem	17,23m <sup>2</sup>
pokój	12,85m <sup>2</sup>
pokój	7,92m <sup>2</sup>
łazienka	4,09m <sup>2</sup>
łazienka	1,99m <sup>2</sup>
ogródek	33,22m <sup>2</sup>



ściany możliwe do demontażu  
ściany niedemontowalne