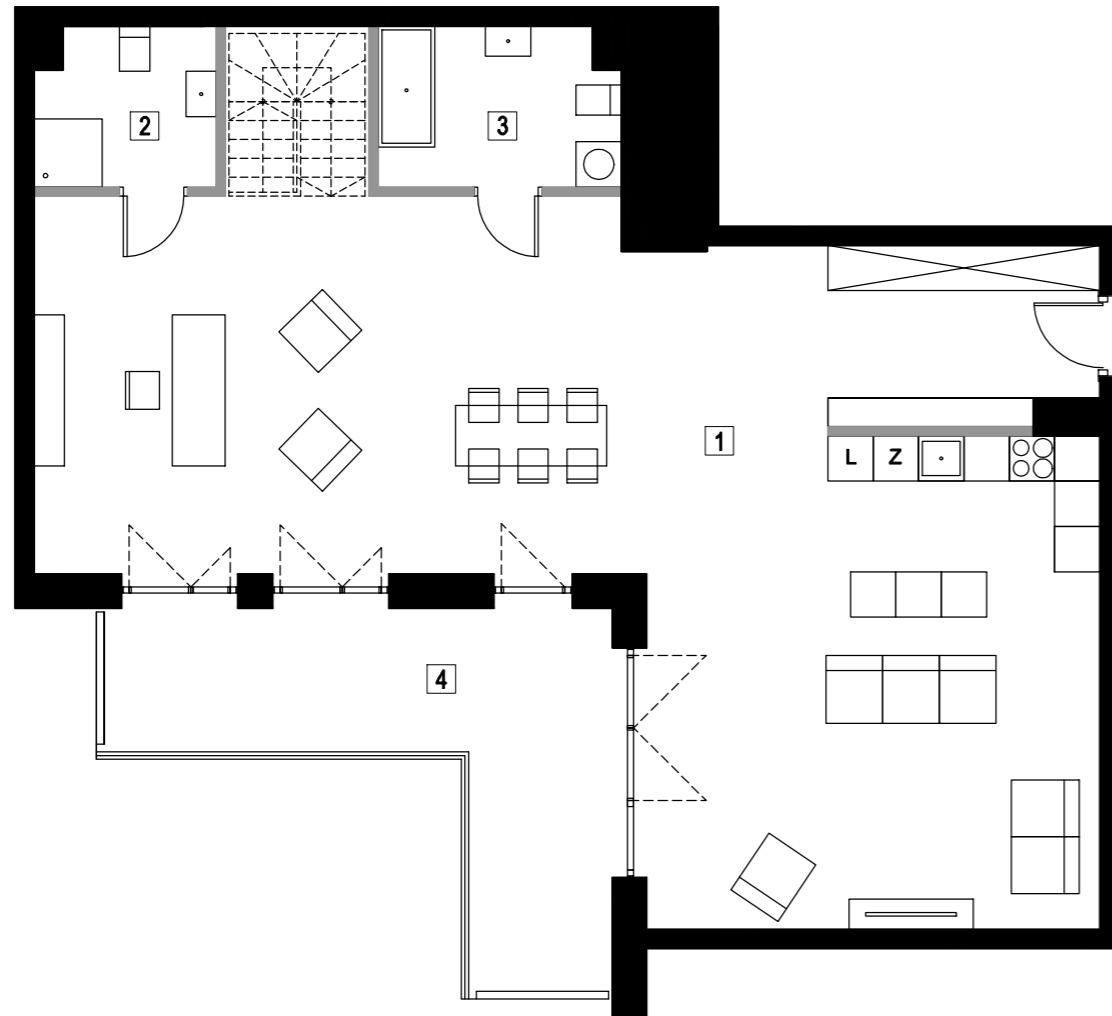
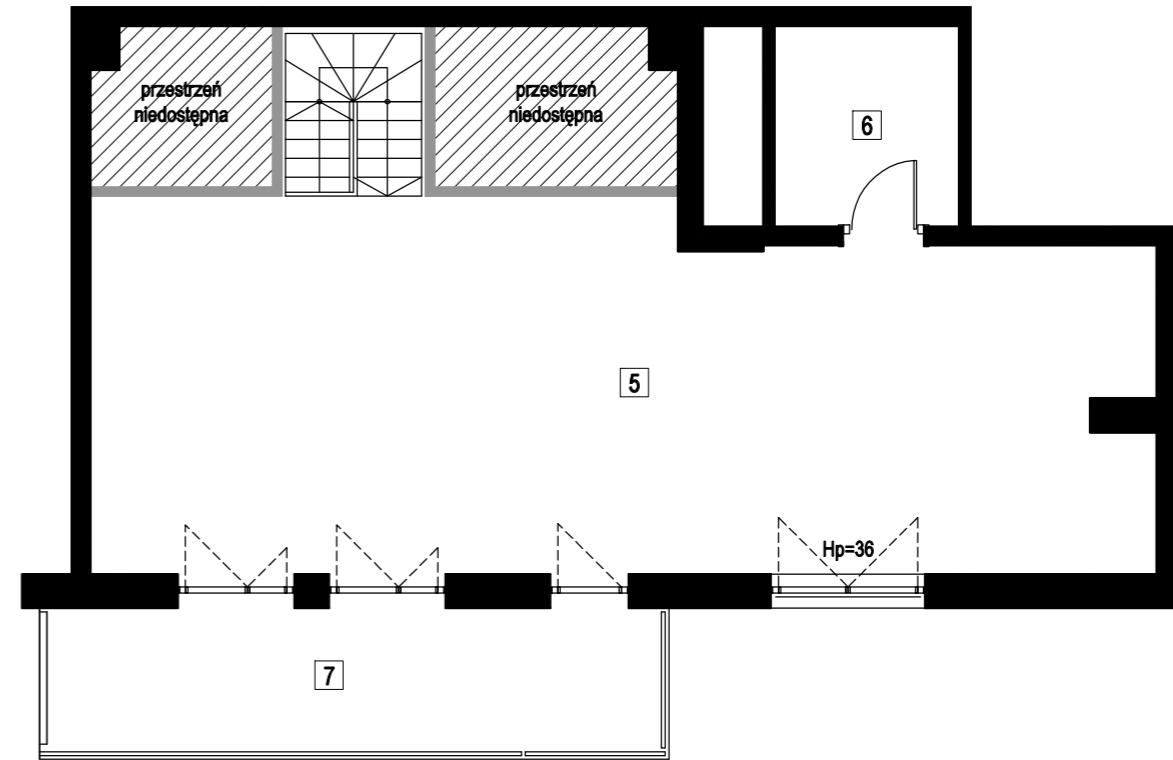


MIESZKANIE 5.8

POZIOM 1



ANTRESOLA



1	POKÓJ DZIENNY Z ANEKSEM KUCHENNYM	98,01 m ²
2	POKÓJ	4,91 m ²
3	POKÓJ	6,68 m ²
	SUMA	109,56 m ²
4	BALKON	21,02 m ²
5	ANTRESOLA	65,86 m ²
	SUMA P1 + ANTRESOLA	175,46 m ²
6	KOMÓRKA LOKATORSKA K16	6,86 m ²
7	BALKON	17,47 m ²